

- 3) Lay out pieces F as shown (Fig 7), be sure rabbet and moulded edge are up. Drill two 1/16" holes evenly spaced between the lines spaced 3/4" apart. There should be eight holes in each F. Place a small amount of glue in 3/4" spaces. Nail pieces F to pieces C and D with 1 1/2" finishing nails, nailing from outside of F into pieces C and D. Pieces C and A should sit between the rabbet and 1/4" cove on pieces F. Lay out D (Fig 8) and place a small amount of glue in the spaces that F will be nailed to. Place a small amount of glue on B gets no glue. Nail through A and B into F with 1 1/2" finishing nails. Place a small amount of glue on E, and nail E to underside of B nailing through B with 1 1/2" finishing nails (if you expect cue rack to get rough use pre-drill and screw E to B). Glue end of J and insert it in the 1/2" hole drilled in E. At this point nail in all pieces K, by pre-drilling, gluing and nailing each piece K with 3/4" finishing nails (Fig 9). Use very little glue so as to lessen clean-up.
- 4) Check that H and G fit in rabbet joints in ABF assembly. If ABF has been assembled correctly G and H should butt together in the center of top piece C. Glue rabbet joint and back of shelves that are in front of H. Nail H to ABF assembly with 3/4" finishing nails. Using a nailset, set all nails slightly below surface of project.
- 5) Sand and stain project to manufacturer's instructions and allow to dry. Fill exposed nail and screw holes, if any, with filler mixed with stain to match dry stained project, or coloured putty. Apply final finish to manufacturer's instructions.
- 6) Glue and nail chalkboard G to back of frame using 3/4" finishing nails.

On materials:

Use a wood to match your pool table. Ensure the 1x4 is entirely free of knots as routing and trimming is required. If you want, get creative with your router to make your own cove moulding from a length of 1x4.

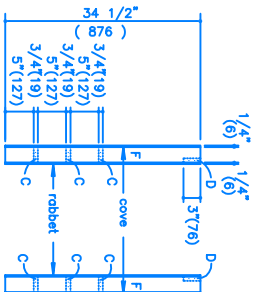


FIGURE 7

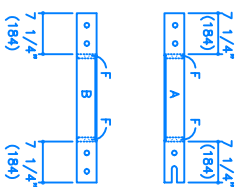


FIGURE 8

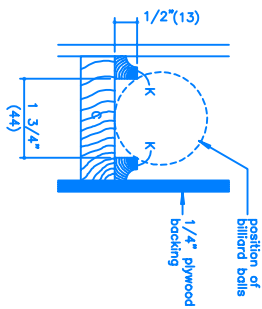
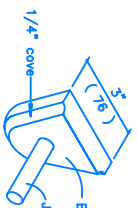
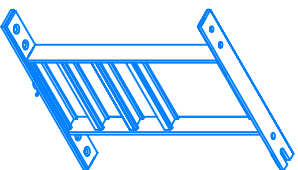
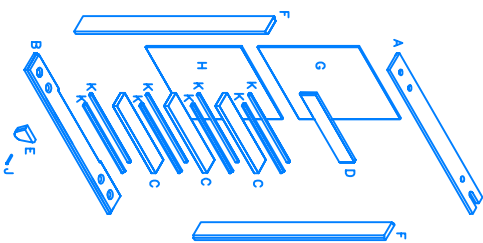


FIGURE 9



COMPLETED PROJECT

